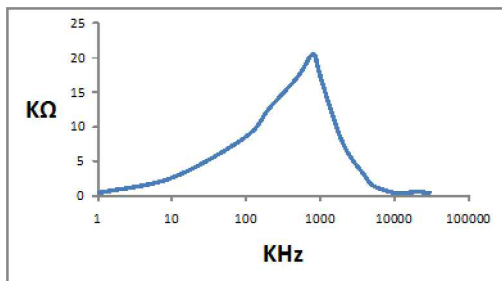


The information contained in this drawing is the sole property of Coil Winding Specialist Inc. (CWS)
Any reproduction in part or whole without written permission of CWS is prohibited.

IMPEDANCE



6 BUILT TO RoHS COMPLIANCE AND LEAD FREE.

5 MARK PART NUMBER AND REVISION.

4 TIN LEADS APPROX. 0.5 INCH AND FLUSH WITH THE COIL EDGE.

WEIGHT = 120 GRAMS
 OPERATING TEMP RANGE = -25 °C TO 120°C
 MAX TEMP RISE = 40 °C
 INTERWINDING ISOLATION = 2000 VOLTS RMS.
 DCR ON EACH WINDING = 17.3 mΩ MAX.
 SRF = 645 KHz
 RATED VOLTAGE = 250 VAC OR VDC
 RATED CURRENT = 13 AMPS
 LEAKAGE INDUCTANCE = 37.8 uH TYP @ 10 KHz, 1 Vrms.
 INTERWINDING CAPACITANCE= 8.0 pF TYP @ 100KHz.
 IMPEDANCE = 19.8 kΩ MIN @ 1 MHz.
 L = 48 mH MIN @ 1 KHz, 1 Vrms, 0 ADC
 INSULATION RESISTANCE = 100 MEGA-OHMS MIN. @ 500 VDC

3 SPECIFICATIONS AT 25°C:

WIRE: UL RECOGNIZED 200°C RATED MAGNET WIRE
 CWS BYTEMARK OR OTHER APPROVED PART
 CORE: NANOCRYSTALLINE OR AMORPHOUS CORE

BOBBIN RATING CLASS B (200°) REQUIRED

1 MATERIAL: UL RECOGNIZED 94V-0 FOR FLAMMABILITY

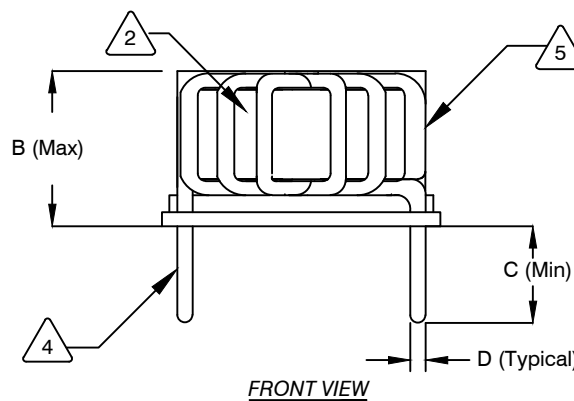
NOTES: UNLESS OTHERWISE SPECIFIED. READ NOTES FROM BOTTOM TO TOP.

DIMENSIONAL TOLERANCE INCHES [MM]

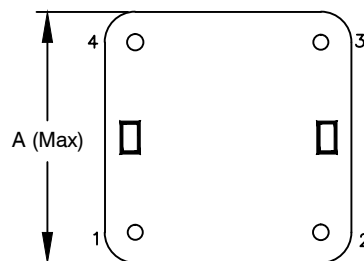
A(WIDTH) Max	B(HGHT) Max	C(LEAD) Min	D(LEAD DIA) TYP	E (Min/Max)	P1 Ref	P2 Ref
1.84 [46.8]	1.23 [31.3]	.05 [12.7]	0.06 [1.45]		1.36 [34.6]	1.36 [34.6]

REVISION HISTORY

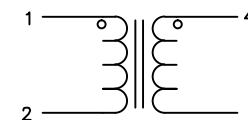
REV	ECN	DESCRIPTION	BY	DATE	CHK	DATE
A	1	PRODUCTION RELEASE	KC	12/16/10	JLAU	12/16/10



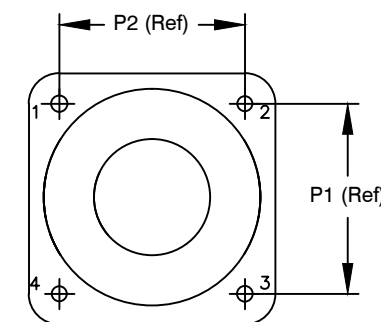
FRONT VIEW



BOTTOM VIEW



SCHEMATIC



MOUNTING HOLES PATTERN

QTY		CODE IDENT		MFG. P/N		DESCRIPTION		ITEM NO.	
PARTS LIST									
AUTOCAD		X		www.coilws.com		Coil Winding Specialist Inc. 353 West Grove Ave Orange, California. 92865 sales@coilws.com			
SOLIDWORKS									
SIGN		DATE		TITLE: Nanocrystalline Inductor Common Mode Chokes Horizontal Mount					
DRAWN		RLAU							
CHECKED		AK							
ENGR.		JLAU							
APPR.		JLAU							
SIZE		DWG. NO.		KN-H-483U-13A				REV A	
SCALE		2=1				SHEET 1 OF 1			

UNLESS OTHERWISE SPECIFIED
DIMENSIONING AND TOLERANCE PER ANSI Y14.5M
ALL DIMENSIONS ARE IN INCHES AND [MILLIMETERS].
TOLERANCE INCHES: .XXX=±.005 .XX=±.015 <X=±0°30'
TOLERANCE METRICS: .XXX=±.127 .XX=±.38 <X=±0°30'
ANGLE PROJECTION
DO NOT SCALE DRAWING